

# WILDLIFE IN MANAGED FORESTS: OREGON FOREST PRACTICES ACT REFERENCE SERIES



Managed forests provide valuable habitat for wildlife at all forest stages. Some wildlife, including sensitive, threatened and endangered species, has special protections under the Oregon Forest Practices Act (FPA) and/or the state and federal Endangered Species Acts (ESA). The Wildlife in Managed Forests: Reference Series serves to outline these protections for a variety of species of interest. Each fact sheet in the Reference Series also includes brief background information about the species, including identifying features, habitat requirements and nesting or mating chronology.

## WHAT DOES THE FPA REQUIRE?

Requirements for species protections vary widely under the FPA, dependent upon species needs and existing regulations. The FPA outlines several generic prescriptions for all wildlife species, such as leaving wildlife trees and down logs. On top of these prescriptions, sensitive wildlife sites receive additional species-specific protections. Sensitive wildlife sites are defined as:

- habitats of fish and wildlife species identified as threatened and endangered under the federal or state ESA
- sensitive bird nesting, roosting and watering sites (associated with osprey and great blue heron)
- biological sites that are ecologically and scientifically significant
- significant wetlands
- additional critical wildlife or aquatic habitat sites as designated by the Oregon Department of Forestry

FPA protections to sensitive wildlife sites generally include timing restrictions (no work near nest sites during critical nesting/breeding periods) and site buffers, although some additional species-specific protections are required. These protections are outlined in each of the individual species fact sheets included in the Reference Series.

## WHEN ARE THE CRITICAL NESTING PERIODS?

Critical nesting periods vary by species. A table showing an overview of the nesting and breeding periods for each of the species included in the Reference Series is provided on the opposite page.



## SPECIES INCLUDED IN THE REFERENCE SERIES

- Bald eagle
- Band-tailed pigeon
- Golden eagle
- Great blue heron
- Marbled murrelet
- Northern goshawk
- Northern spotted owl
- Osprey
- Peregrine falcon

## SOURCES & MORE INFORMATION

[Cornell Lab of Ornithology](#)

[Oregon Forest Practices Act](#)

[KnowYourForest.org](#)

[EPA.gov](#)



## ABOUT OFRI

The Oregon Forest Resources Institute was created by the Oregon Legislature in 1991 to advance public understanding of forests, forest products and forest management and to encourage sound forestry through landowner education.

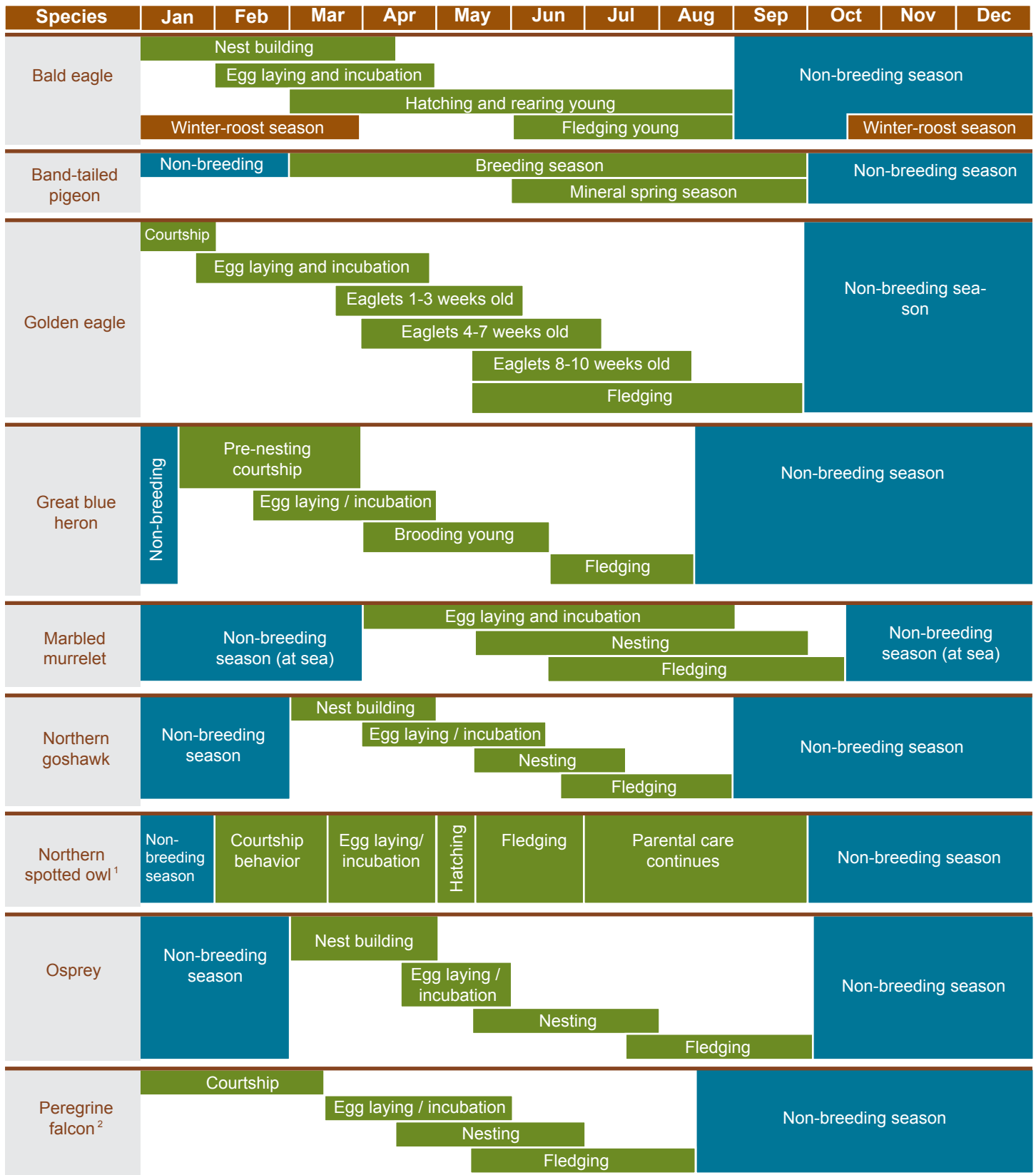
Download more Wildlife in Managed Forest publications at [KnowYourForest.org](#). Permission granted to copy in whole or in part without change.



**Oregon Forest  
Resources Institute**

317 SW Sixth Ave., Suite 400  
Portland, OR 97204-1705  
971-673-2944  
[OregonForests.org](#)

## CRITICAL NESTING PERIODS



<sup>1</sup> Nesting chronology generalized. Timing of nesting and fledging vary by latitude and elevation.

<sup>2</sup> Variable dependent upon elevation of nest sites. Lower-elevation sites experience earlier chronologies than higher-elevation sites. Egg laying at high-elevation sites may not be completed until late May, with fledging extending to mid-August.

- WILDLIFE AND FORESTRY -

# WILDLIFE IN MANAGED FORESTS: OREGON FOREST PRACTICES ACT REFERENCE SERIES

## SPECIES INCLUDED IN THIS REFERENCE SERIES:

Bald eagle  
Band-tailed pigeon  
Golden eagle  
Great blue heron  
Marbled murrelets  
Northern goshawk  
Northern spotted owl  
Osprey  
Peregrine falcon



317 SW Sixth Ave., Suite 400  
Portland, OR 97204  
(971) 673-2944

[OregonForests.org](http://OregonForests.org)  
[KnowYourForest.org](http://KnowYourForest.org)

© 2016