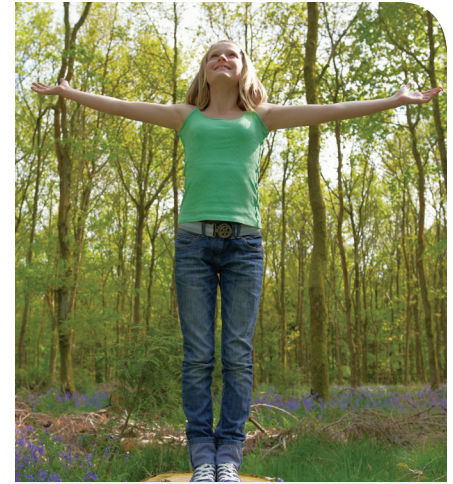


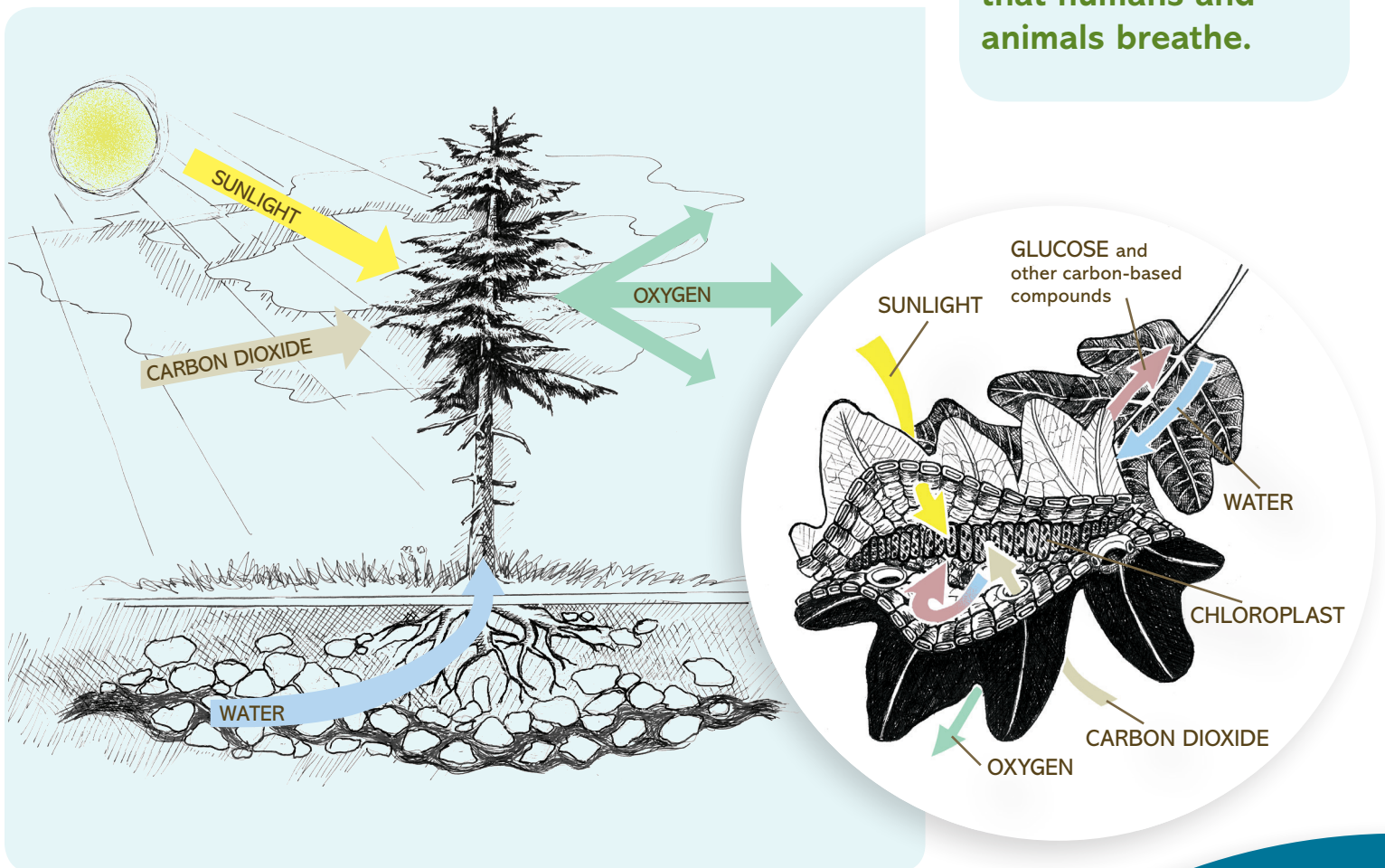
## HOW DOES PHOTOSYNTHESIS WORK?

Photosynthesis is a natural process by which green trees and plants use energy from the sun to make the food they need to live and grow. In the process, the atmosphere is continuously replenished with oxygen.

Here's how it happens in most plants: Roots absorb water, as well as minerals, from the soil. These are carried to the plant's needles or leaves. At the same time, the needles and leaves absorb carbon dioxide from the air. These raw materials flow to plant cells called chloroplasts that contain chlorophyll. Chlorophyll uses sunlight energy to transform the carbon dioxide and water into oxygen and carbon-based compounds such as glucose (a sugar that helps the plant grow). The plant doesn't need the leftover oxygen, so it releases it into the atmosphere.



Photosynthesis provides most of the **OXYGEN** that humans and animals breathe.



The Oregon Forest Resources Institute is a state agency dedicated to improving understanding of Oregon forests and all the ways they benefit society. Permission granted to copy in whole or in part without charge.

Download our free Oregon Forest Facts & Figures app from Apple App Store or Google Play.

Learn more at [OregonForests.org](http://OregonForests.org) or [f/OregonForestResourcesInstitute](https://www.facebook.com/OregonForestResourcesInstitute)



Oregon Forest  
Resources Institute