



Oregon Forest
Resources Institute

ANNUAL REPORT



Setting the stage for success

At the Oregon Forest Resources Institute (OFRI), we strive to be the most credible source of quality information and education about managing and sustaining Oregon's forests for all the benefits they provide.



I'm confident we're meeting that goal as I reflect on all we've accomplished across our forest education programs for the public, K-12 teachers and students, and landowners after completing the first full fiscal year since adopting our five-year strategic plan.

The public education program produced the 2025-26 edition of our wildly popular *Oregon Forest Facts* booklet, a comprehensive source of information about Oregon's forests and forest-based economy.

More than 89,000 students participated in OFRI-supported field forestry education programs. The K-12 education program also updated the curriculum and student workbook for the natural resources education program we provide at The Oregon Garden in Silverton to ensure both meet the latest state science education standards.

OFRI also published the latest revision of *Oregon's Forest Protection Laws: An Illustrated Manual* to include the monumental changes to the Oregon Forest Practices Act resulting from the collaborative Private Forest Accord agreement. This popular publication is used by small forest landowners, professional foresters and regulators alike.

Finally, this past year also saw material progress toward meeting the priorities of our strategic plan, which will continue to guide how OFRI grows its programs and improves its methods for enhancing Oregonians' understanding of the social, environmental and economic benefits of our forests.

These are just a few highlights from the past fiscal year. Read on to learn more about our work in 2024-25 to help Oregonians of all ages better understand and appreciate our forests.

—Paul Betts, chair, OFRI board of directors

OFRI by the numbers

NEW OR UPDATED PUBLICATIONS

- *Find Your Path* – a publication for students highlighting the diversity of forest-related career paths
- *Find Your Path Instruction Guide* – a pamphlet to help teachers go deeper into the material included in the student publication
- *K-12 Forest Education Opportunities* – an updated guide to forest education programs and materials for Oregon teachers and students
- *Little Brown Bats and Forestry* – a *Wildlife in Managed Forests* reference sheet explaining the habitat needs of the little brown bat
- *Managing Logging Slash Piles in Western Oregon* – an updated pamphlet detailing best practices for burning woody logging debris
- *Oregon Forest Facts 2025-26 Edition* – a pocket-sized booklet that serves as a detailed reference guide to Oregon's forests and forest-based economy
- *Oregon's Forest Protection Laws: An Illustrated Manual* – a printed version of the revised fourth edition, updated to include recent changes to state forestry regulations
- *The North American Beaver* – a *Wildlife in Managed Forests* resource updated to include information on new state laws regarding beaver conservation

PUBLICATIONS DISTRIBUTED

- Printed publications distributed: 50,809
- Digital publications downloaded: 5,623

DIGITAL METRICS

- Facebook: 11,496 "likes"
- Instagram: 1,677 followers
- LinkedIn: 1,067 followers
- Threads: 504 followers
- X: 1,779 followers
- YouTube: 865,107 views

EVENTS

- Alternative Approaches to Woody Residue Management Field Tour: 70 attendees
- Community outreach presentations: 13 (with 640 participants)
- Conference booth displays: 19 (with 8,265 participants)
- Conferences, tours or forums: 14 (with 1,861 participants)
- Forest education professional development workshops: 834 teacher attendees
- Landowner workshops: 101 (with 4,551 participants)
- Oregon Envirothon 2025 (statewide high school natural resource knowledge competition): 170 student attendees representing 20 schools
- Students who participated in OFRI-supported field forestry programs: 89,138

OFRI STRATEGIC PLAN

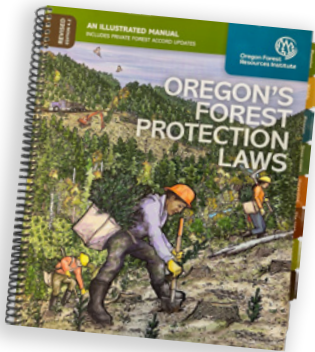
The *Oregon Forest Resources Institute Strategic Plan 2023-28* and a plan summary sheet are available to download at OregonForests.org/about-ofri.

LANDOWNER EDUCATION

OFRI encourages sustainable forestry by helping to educate landowners and forest professionals. For more information, visit [KnowYourForest.org](https://www.knowyourforest.org).

Updated *Illustrated Manual* made available in print

OFRI published the long-awaited hard-copy version of the updated *Oregon's Forest Protection Laws: An Illustrated Manual*.



First published in 2002 to offer guidance, using detailed illustrations, to forest landowners and operators on following state forestry laws, OFRI's *Illustrated Manual* has since gone through several revisions as the laws have changed. The recently published revised fourth edition of the manual was necessary following major changes to Oregon's forest practice regulations.

Free printed copies of the manual can be ordered through the publication library on OFRI's website, [OregonForests.org](https://www.OregonForests.org).

TREE SCHOOLS OFFERED ACROSS OREGON

OFRI's landowner education staff and contractors taught classes and provided educational materials, including the newly printed *Illustrated Manual*, to woodland owners from across the state at Oregon State University Extension Service's Tree School Clackamas in Oregon City, as well as regional Tree Schools in southern and eastern Oregon.

TOUR DEMONSTRATES ALTERNATIVE WAYS TO MANAGE WOODY DEBRIS

More than 70 people attended an educational field tour for forest landowners that OFRI co-hosted in Corvallis to demonstrate ways to manage woody debris on forestland in the wildland-urban interface.

The Alternative Approaches to Woody Residue Management tour visited a suburban forest parcel undergoing fire risk reduction and habitat restoration work. It included demonstrations of woody debris mastication and the use of an air curtain incinerator.



Below, from left:

OFRI supported the Oregon Small Woodlands Association's 2025 Family Forest Convention and the Oregon Tree Farm System's Tree Farmer of the Year Tour in Philomath.

OFRI sponsored, delivered programs and had a table at the 2025 joint meeting of the Oregon chapters of the Society of American Foresters and The Wildlife Society in Salem.



PUBLIC EDUCATION

OFRI works to advance public understanding of the social, environmental and economic importance of Oregon's forests. For more information, visit OregonForests.org.

Oregon Forest Facts updated



OFRI published the 2025-26 edition of its *Oregon Forest Facts* publication.

The pocket-sized booklet, which has long been a mainstay of the Institute's educational resources, serves as a detailed reference guide to Oregon's forests and forest-based economy. It includes information, maps, graphs and statistics about forestland ownership, timber harvest, forest-based employment and wood products production.

Along with the printed version and downloadable PDF, the information found in the *Oregon Forest Facts 2025-26 Edition* is available on a dedicated website, OregonForestFacts.org.

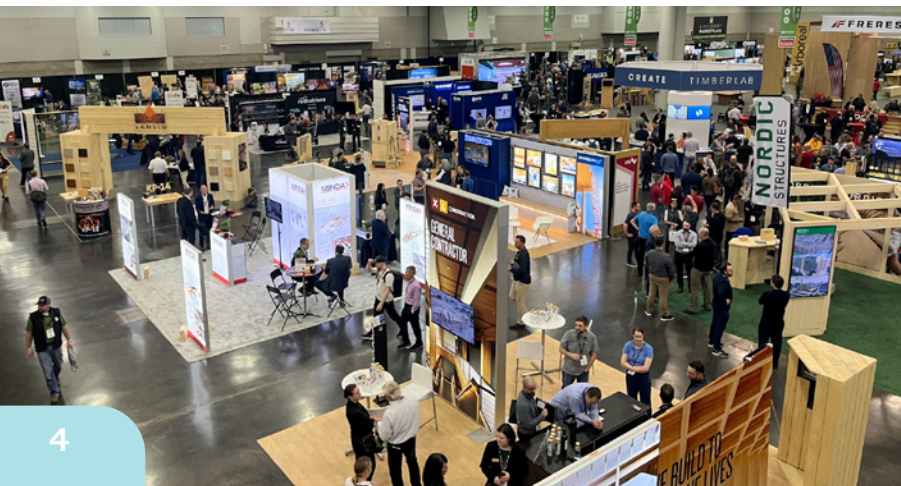
The updated *Oregon Forest Facts* includes the latest statistics on Oregon's average forest sector wages, softwood lumber and plywood production, and total wildland fires and acres burned in the state over the past decade, among other data related to Oregon's forests.

SIGNS EDUCATE ABOUT OREGON'S CHRISTMAS TREE INDUSTRY

New interpretive signs near a Christmas tree demonstration plot at The Oregon Garden help visitors to the Silverton attraction learn about Oregon's Christmas tree industry.

The two signs, which OFRI developed in partnership with industry representatives, highlight Oregon's status as the No. 1 Christmas tree growing state in the country.

Each sign is situated near a Christmas tree plot in the Rediscovery Forest, a demonstration forest located inside The Oregon Garden that the Institute manages for educational purposes.

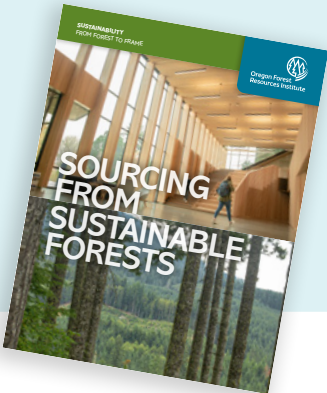




OFRI REPORT AND VIDEO SERIES WIN AWARDS

The Association for Communication Excellence (ACE) recognized an OFRI special report about sustainable forestry and wood sourcing and a video series on reforestation practices in Oregon with two Gold Awards and a Bronze Award, respectively.

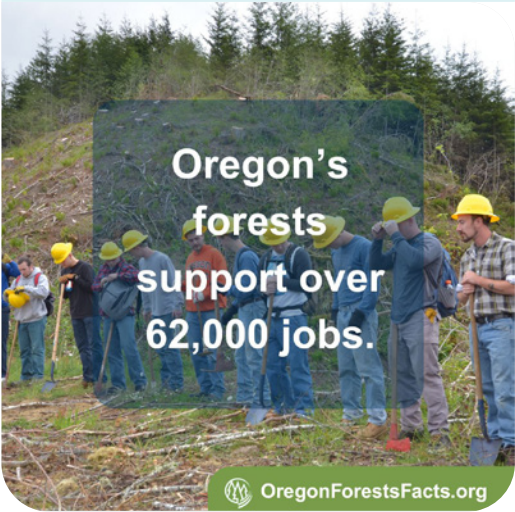
OFRI's *Sourcing from Sustainable Forests* report earned Gold Awards in the ACE awards program's publishing and writing categories. ACE also honored the OFRI-produced video series *Reforestation in Oregon* with a Bronze Award. Both awards were announced at the organization's 2025 conference for agriculture and natural resource communications professionals in Milwaukee, Wisconsin.



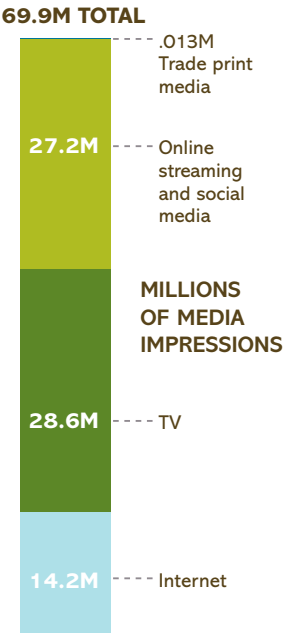
DIGITAL REACH

Average monthly web visits	11,769
Total YouTube views	865,107
Facebook "likes"	11,496
X followers	1,779
Instagram followers	1,677
LinkedIn followers	1,067
Threads followers	504

OFRI continues to expand its digital reach through websites, a YouTube channel and a growing number of social media followers.



EDUCATIONAL ADVERTISING IMPRESSIONS



FY 2024-25

OFRI's annual educational advertising campaign includes trade print media, TV, digital streaming services and social media, as well as internet and search engine ads.

Previous page, bottom:

OFRI hosted a booth at the 2025 International Mass Timber Conference in Portland and presented at a forest tour to help attendees learn about sustainable forestry and wood sourcing.

Below, left to right:

OFRI produced a set of stickers with information about native Oregon trees and a tote bag with a Douglas-fir cone to help promote the Institute's work to educate Oregonians about forests.

A public tour hosted by the OFRI board highlighting sustainable wood architecture included stops at the Portland International Airport and the Portland-based mass timber manufacturer Timberlab.



K-12 EDUCATION

OFRI provides curriculum, classroom materials, workshops and field trip opportunities to increase forest literacy among K-12 teachers and students. For more information, visit LearnForests.org.

Field program curriculum and workbook get updates



Garden Natural Resources Education Program, which the Institute offers in partnership with The Oregon Garden, to highlight natural features of the 80-acre botanical garden such as its wetland area and the OFRI-managed Rediscovery Forest. The updated curriculum also meets the latest state science education standards and includes hands-on lessons that teach students about the forest food web, plant and animal adaptations, wildlife habitat and healthy forests.

In addition to the curriculum update, OFRI revised the *Field Notes* workbook that students use while participating in the program. Recent updates include additional illustrations to make this workbook more inclusive for multilingual learners.

Below, from left:

In 2024-25, Rikki Heath was promoted to director of K-12 education programs.

Jenna Mendenhall joined the OFRI staff as the Institute's new environmental educator.

An Oregon Youth Conservation Corps crew helped spruce up the Rediscovery Forest, OFRI's demonstration forest inside The Oregon Garden in Silverton.

The curriculum and workbook for an OFRI program that provides educational field trips to students in fourth through sixth grades to The Oregon Garden in Silverton received updates in 2024-25.

OFRI updated the curriculum for the Oregon



FOREST CAREERS PUBLICATION UPDATED

OFRI updated *Find Your Path*, an educational publication for middle and high school students highlighting the array of forest-related career opportunities.

The 24-page publication profiles 18 Oregon-based forest professionals and helps students discover the collection of industries that account for one out of every 20 jobs in the state. *Find Your Path* looks at the wide range of employment opportunities available in Oregon's forest sector, including information about the education, training and experience required to pursue each of the featured career paths, as well as a QR code that directs students to the current salary ranges for each position.



OREGON ENVIROTHON CONTINUES TO EXPAND

OFRI's K-12 education program organized another successful Oregon Envirothon, an annual natural resource knowledge competition for high school students.

More than 170 students representing 20 high schools from across the state attended the 2025 Oregon Envirothon, held in May at The Oregon Garden in Silverton.

To help prepare teachers whose students were planning to participate in this year's Oregon Envirothon, OFRI hosted a training day in December 2024 at The Oregon Garden that included information about the competition's "core four" subject areas in addition to the 2025 current environmental issue and oral presentation scenario.

OFRI also updated the **OregonEnvirothon.org** website to make it easier for students and their advisors to access the information they need to train for the competition day.

Below, from left:

OFRI hosted an outdoor school for Marion County students as part of a coalition of organizations dedicated to environmental education.

A summer professional development field tour for high school teachers focused on the interrelationships between pollinators and forests.





◀ **Paul Betts**
Chair
Miami Alternatives LLC



Dan Newton ▶
Vice Chair
Newton Forestry LLC



◀ **Jennifer Beathe**
Starker Forests Inc.



Gordon Culbertson ▶
Whitewater Forests
LLC (small woodland
owner)



◀ **Dr. Thomas DeLuca**
Oregon State
University College
of Forestry (dean)



**Dr. Kristopher
Elliott** ▶
Oregon State University
Extension Service
(public representative)



◀ **Daniella Giustina**
Giustina Land &
Timber Co.



Courtney Griesel ▶
Sierra Pacific
Industries



◀ **Mike Hicks**
IAM-AW District
W24 (employee
representative)



Garren Hitner ▶
Century Forest
Management



◀ **Kristin Rasmussen**
Hampton Lumber &
Family Forests



**Madeleine
Thompson Rudolph** ▶
Thompson Tree Farm

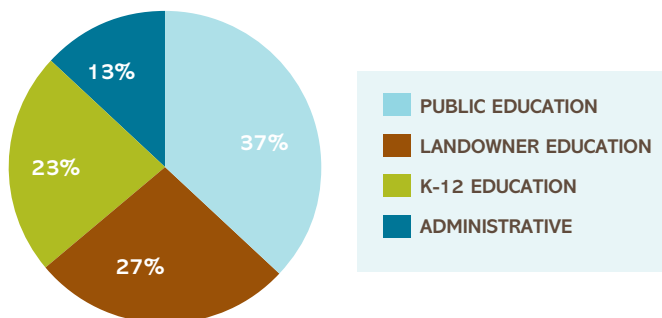


◀ **Brian Trenholm**
Weyerhaeuser

OFRI board of directors

The Oregon Forest Resources Institute is governed by a board made up of 11 voting members appointed by the state forester, plus two non-voting members. Board members represent timber producers, small woodland owners and forest products industry employees. Non-voting members include a public representative and the dean of the Oregon State University College of Forestry. An Oregon Department of Forestry liaison assists the board.

ADMINISTRATIVE COSTS VS. PROGRAM COSTS



In each of the past 24 years, OFRI has received the state controller's "Gold Star" award for timely and accurate financial reporting.

OFRI STAFF

Inka Bajandas, Public Affairs Manager
Jordan Benner, Director of Communications
Rikki Heath, Director of K-12 Education Programs
Jenna Mendenhall, Environmental Educator
Margaret Miller, Forest Landowner Education Manager
Joni Nebril, Executive Assistant
Jim Paul, Executive Director
Kathy Storm, Director of Business Operations
Julie Woodward, Deputy Director and Director of Forestry

OFRI MISSION STATEMENT The Oregon Forest Resources Institute supports the forest sector and the stewardship of natural resources by advancing Oregonians' understanding of the social, environmental and economic benefits of our forests.



**Oregon Forest
Resources Institute**

9755 SW Barnes Road, Suite 210
Portland, OR 97225

971-673-2944

OregonForests.org

© 2025